



2025
2024

CATALOGUE

CORPORATE BRIEF

Founded in 1993 by the KMC Group, TEC is wholly owned by the group and specializes in manufacturing and marketing bicycles, e-bikes, and roller shutter chains. TEC's chain is distributed across China and 112 countries worldwide, earning acclaim and consumer preference.

CORE VALUES

Quality: TEC's chain products adhere to ISO 9001 standards, ensuring reliability and durability even under strenuous conditions through rigorous testing.

Innovation: TEC fosters innovation through collaboration with over 1000 domestic and foreign

partners, employing a skilled technical team to develop new products and technologies.

Reliability: TEC ensures stable and reliable chain operation through stringent design and manufacturing controls, delivering top performance across various applications and co-branded products.

TEC operates production facilities in China, Taiwan, and Vietnam, boasting an annual capacity of 30 million chains. With a focus on quality, innovation, and customer service, TEC Titanium provides global solutions and remains a trusted partner across industries.



TEC 钛克品牌始于1993年，由KMC 桂盟集团创建并完全控股。专注于自行车链条、电动车链条和卷闸门链条等通用链条的生产与销售。产品销往中国各地和112个国家，深受市场认可和消费者喜爱。

核心价值

品质

产品符合ISO9001质量管理体系标准，经过各种测试和验证，保证在苛刻条件下表现出色。

创新

与1000多家国内外品牌商和合作伙伴紧密合作，不断研发创新，提供高质量的产品。

可靠性

严格控制产品设计和制造过程，确保每条链条都能稳定可靠地运行，与国内外自行车品牌商合作，共同开发联名产品。

生产基地分布于中国、台湾和越南，拥有独立研发和制造技术，全程采用ISO9001质量管理体系标准，年产能达3000万条。TEC 钛克以优质产品、持续创新和优质客户服务为全球客户提供专业解决方案。



Function

- Stretch Proof Treatment
卓越耐久性
- Mushroomed Riveting Tech
蕈状铆接技术
- Countersink Riveting Tech
隐沉式精密铆合技术
- Double "D" Bridge
欧翼桥型
- "M" Bridge Outer Plate
碟翼桥型
- Double Inner Bridge
双内桥型
- Roller Link Plate Chamfering
内链片导角
- Pin Link Plate Chamfering
外链片导角
- Heavy Duty Structure
HX强化结构
- Heavy Duty Plate
强化型链片
- Internal Gear Hub
内变速系统适用
- RustBuster Function
抗锈加强
- Anti-Drop Design
防掉链设计
- Square-Edge Riveting
四方角铆合技术
- Diagonal Riveting
对称角铆合技术



CRANK IT UP

Road & MTB

GT-12 NEW



SPECIFICATION

Size: 1/2" x 11/128"

Speed of Sprocket: 12

Color: Ti-N Golden/Ti-N Golden,
Silver/Silver, Silver/Dark Silver



Strengthened durability, Enhanced PinPower

Superior shifting efficiency

Ave. PinPower: 250KGF

Ave. Tensile Strength: 920KGF

尺寸: 1/2" x 11/128"

速别: 12

颜色: 镀钛金/镀钛金, 镀银/镀银, 镀银/深银

耐磨耗效能强化、优越小轴嵌合力

卓越换档效率

平均嵌合力: 250 公斤力

平均拉力: 920 公斤力



12SPEED

1/2" x 11/128"



Road
& MTB

GT-11 **NEW**

11SPEED
1/2" x 11/128"



SPECIFICATION

Size: 1/2" x 11/128"

Speed of Sprocket: 11

Color: Ti-N Golden/Ti-N Golden,
Silver/Silver, Silver/Dark Silver



Strengthened durability, Enhanced PinPower

Superior shifting efficiency

Ave. PinPower: 250KGF

Ave. Tensile Strength: 920KGF

尺寸: 1/2" x 11/128"

速别: 11

颜色: 镀钛金/镀钛金, 镀银/镀银, 镀银/深银

耐磨耗效能强化、优越小轴嵌合力

卓越换挡效率

平均嵌合力: 250 公斤力

平均拉力: 920 公斤力





Road
& MTB

GT-10

10SPEED

1/2" x 11/128"



SPECIFICATION

Size: 1/2" x 11/128"

Speed of Sprocket: 10

Color: Silver/Silver, Silver/Dark Silver



Strengthened durability, Enhanced PinPower

Superior shifting efficiency

Ave. PinPower: 200KGF

Ave. Tensile Strength: 920KGF

尺寸: 1/2" x 11/128"

速别: 10

颜色: 镀银/镀银, 镀银/深银

耐磨耗效能强化、优越小轴嵌合力

卓越换档效率

平均嵌合力: 200 公斤力

平均拉力: 920 公斤力



9SPEED
1/2" x 11/128"

GT-9



SPECIFICATION

Size: 1/2" x 11/128"

Speed of Sprocket: 9

Color: Silver/Silver, Dark Silver/Brown



Strengthened durability, Enhanced PinPower

Superior shifting efficiency

Ave. PinPower: 200KGF

Ave. Tensile Strength: 920KGF

尺寸: 1/2" x 11/128"

速别: 9

颜色: 镀银/镀银, 深银/棕

耐磨耗效能强化、优越小轴嵌合力

卓越换档效率

平均嵌合力: 200 公斤力

平均拉力: 920 公斤力



CT-8

NEW



SPECIFICATION

Size: 1/2" x 3/32"

Speed of Sprocket: 8

Color: Silver/Bule, Bule/Bule



Superior shifting efficiency

Ave. PinPower: 120KGF

Ave. Tensile Strength: 840KGF

尺寸: 1/2" x 3/32"

速别: 8

颜色: 镀银/深蓝, 深蓝/深蓝

卓越换档效率

平均嵌合力: 120 公斤力

平均拉力: 840 公斤力



CT-7

NEW



SPECIFICATION

Size: 1/2" x 3/32"

Speed of Sprocket: 7

Color: Dark Silver/Dark Silver



Superior shifting efficiency

Ave. PinPower: 120KGF

Ave. Tensile Strength: 840KGF

尺寸: 1/2" x 3/32"

速别: 7

颜色: 深银/深银

卓越换档效率

平均嵌合力: 120 公斤力

平均拉力: 840 公斤力

5-6SPEED

1/2" x 3/32"

C30



SPECIFICATION

Size: 1/2" x 3/32"

Speed of Sprocket: 5-6

Color: Silver/Silver, Silver/Brown, Brown/Brown



Superior shifting efficiency

Ave. PinPower: 110KGF

Ave. Tensile Strength: 840KGF

尺寸: 1/2" x 3/32"

速别: 5-6

颜色: 镀银/镀银, 镀银/棕, 棕/棕

换档效率强化

平均嵌合力: 110 公斤力

平均拉力: 840 公斤力



C410

1SPEED

1/2" x 1/8"



SPECIFICATION

Size: 1/2" x 1/8"

Speed of Sprocket: 1

Color: Silver/Silver, Silver/Matte Black



Ave. PinPower: 110KGF

Ave. Tensile Strength: 840KGF

尺寸: 1/2" x 1/8"

速别: 1

颜色: 镀银/镀银, 镀银/亚黑

平均嵌合力: 110 公斤力

平均拉力: 840 公斤力





CT-1HX **NEW**

Size: 1/2" x 1/8"
Speed of Sprocket: 1
Color: Silver/Silver



Heavy Duty Structure, Anti-drop design
Ave. PinPower: 200KGF
Ave. Tensile Strength: 1050KGF

尺寸: 1/2" x 1/8"
速别: 1
颜色: 镀银/镀银

HX强化结构, 防掉链设计
平均嵌合力: 200 公斤力
平均拉力: 1050 公斤力



CT-1H **NEW**

Size: 1/2" x 1/8"
Speed of Sprocket: 1
Color: Bule/Bule



Heavy plate, Anti-drop design
Ave. PinPower: 140KGF
Ave. Tensile Strength: 950KGF

尺寸: 1/2" x 1/8"
速别: 1
颜色: 深蓝/深蓝

强化厚链片, 防掉链设计
平均嵌合力: 140 公斤力
平均拉力: 950 公斤力



CT-1 **NEW**

Size: 1/2" x 1/8"
Speed of Sprocket: 1
Color: Brown/Brown



Anti drop design
Ave. PinPower: 110KGF
Ave. Tensile Strength: 840KGF

尺寸: 1/2" x 1/8"
速别: 1
颜色: 棕/棕

防掉链设计
平均嵌合力: 110 公斤力
平均拉力: 840 公斤力



1SPEED
1/2" x 1/8"

Fashion Color Chain



Colorfull 彩链系列 PT-812C YS-701 YS-728 YS7614 YS719 YS7459-1 YS706 YS7422

Viva
玩美系列



Silver/Green 銀綠

Starry
星彩系列



Galaxy Blue 银河蓝



Imperial Green 帝王绿



Sakura Pink 樱花粉

Mirage
幻魅系列



Pearl Gold 珍珠金

Option: Unique color customization. 客制：各式色彩皆可客制于全速别12速-单速规格

GT-9

Size: 1/2" x 11/128"
Speed of Sprocket: 9
Color: RB

尺寸: 1/2" x 11/128"
速别: 9
颜色: 灰白



GT-8

Size: 1/2" x 3/32"
Speed of Sprocket: 8
Color: RB

尺寸: 1/2" x 3/32"
速别: 8
颜色: 灰白



C410

Size: 1/2" x 1/8"
Speed of Sprocket: 1
Color: RB

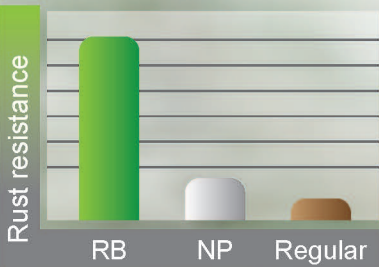
尺寸: 1/2" x 1/8"
速别: 1
颜色: 灰白



Option: 9 speed to 1speed can be customized for anti-rust. 客制：9速-单速规格皆可客制达克锈

RustBuster 达克锈

NEW



RoHS Restriction of Hazardous Substances Directive

RB anti-rust coating
Surpasses 500 hour salt spray test

Durable anti-rust coating from a unique surface treatment that surpasses 500 hour Salt Spray Test. Compliant with EU and US RoHS environmental regulations.

独特表面耐用防锈涂层，耐受超过500小时的盐雾试验。符合欧盟和美国RoHS环境法规



Taicang TEC International Trading Co., Ltd.
太倉鉅克國際貿易有限公司
江苏省苏州市太仓市兴业北路381号 (215400)
No. 381 Xingye North Road,
Taicang City, Jiangsu, China

Copyright (c) May 2024 Taicang TEC International Trading Co., Ltd. All rights reserved.
Specifications are subject to change without notice.