

# CATALOGUE



2025~2026

TAICANG TEC INTERNATIONAL TRADING



# CORPORATE BRIEF

Founded in 1993 by the KMC Group, TEC is wholly owned by the group and specializes in manufacturing and marketing bicycles, e-bikes, and roller shutter chains. TEC's chain is distributed across China and 112 countries worldwide, earning acclaim and consumer preference.

## CORE VALUES

**Quality:** TEC's chain products adhere to ISO 9001 standards, ensuring reliability and durability even under strenuous conditions through rigorous testing.

**Innovation:** TEC fosters innovation through collaboration with over 1000 domestic and foreign

partners, employing a skilled technical team to develop new products and technologies.

**Reliability:** TEC ensures stable and reliable chain operation through stringent design and manufacturing controls, delivering top performance across various applications and co-branded products.

TEC operates production facilities in China, Taiwan, and Vietnam, boasting an annual capacity of 30 million chains. With a focus on quality, innovation, and customer service, TEC provides global solutions and remains a trusted partner across industries.



TEC 钛克品牌始于1993年，由KMC 桂盟集团创建并完全控股。专注于自行车链条、电动车链条和卷闸门链条等通用链条的生产与销售。产品销往中国各地和112个国家，深受市场认可和消费者喜爱。

## 核心价值

### 品质

产品符合ISO9001质量管理体系标准，经过各种测试和验证，保证在苛刻条件下表现出色。

### 创新

与1000多家国内外品牌商和合作伙伴紧密合作，不断研发创新，提供高质量的产品。

### 可靠性

严格控制产品设计和制造过程，确保每条链条都能稳定可靠地运行，与国内外自行车品牌商合作，共同开发联名产品。

生产基地分布于中国、台湾和越南，拥有独立研发和制造技术，全程采用ISO9001质量管理体系标准，年产能达3000万条。TEC 钛克以优质产品、持续创新和优质客户服务为全球客户提供专业解决方案。



# Function

- Stretch Proof Treatment  
卓越耐久性
- Mushroomed Riveting Tech  
蕈状铆接技术
- Countersink Riveting Tech  
隐沉式精密铆合技术
- Double "D" Bridge  
欧翼桥型
- "M" Bridge Outer Plate  
碟翼桥型
- Double Inner Bridge  
双内桥型
- Roller Link Plate Chamfering  
内链片导角
- Pin Link Plate Chamfering  
外链片导角
- Heavy Duty Structure  
HX强化结构
- Heavy Duty Plate  
强化型链片
- Internal Gear Hub  
内变速系统适用
- RustBuster Function  
抗锈加强
- Anti-Drop Design  
防掉链设计
- Square-Edge Riveting  
四方角铆合技术
- Diagonal Riveting  
对称角铆合技术



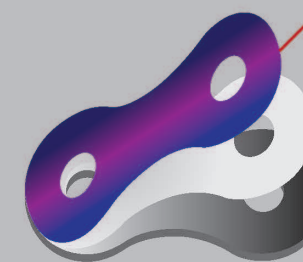
New & Hot  
Products

Ride Your Style.  
Own the Color.

Starry  
星彩系列

New Color TECH

Handness+ Smothness+



PVD TECH

NP Plating

Heat Treatment  
TECH

- Where Durability Meets Brilliance.
- Built Tough. Stays Flawless.
- Eco-Friendly, Zero Compromise.

- 耐刮性与耐腐蚀
- 金属光泽饱满持久
- 环境友善工艺

12-9 SPEED

GT-12 | GT-11 | GT-10 | GT-9



Galaxy Blue 银河蓝



Imperial Green 帝王绿



Sakura Pink 樱花粉



※ 12-11 speed packag with mini chain tool. ※ 12-11速精装包装内含迷你截链器



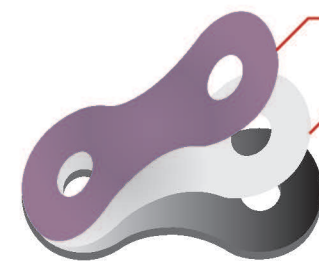
New & Hot  
Products

Ride Your Style.  
Own the Color.



New Color TECH

Handness+ Smoothness+



PVD THCH

NP Plating

Heat Treatment  
TECH

12-9 SPEED

GT-12 | GT-11 | GT-10 | GT-9

※12-11 speed packag with mini chain tool. ※12-11速精装包装内含迷你截链器



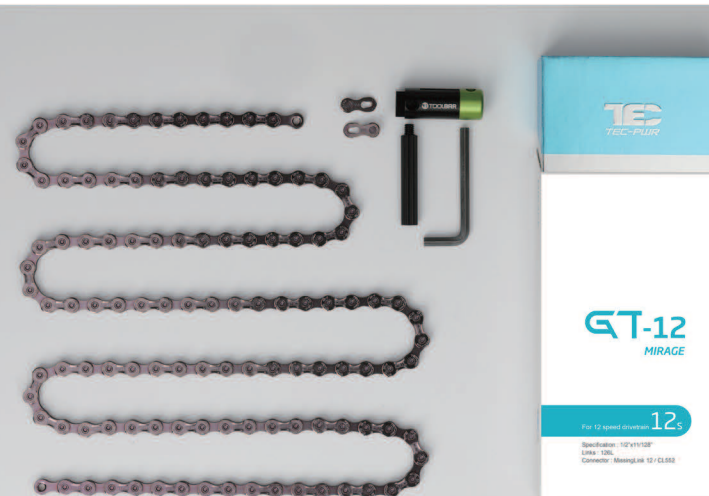
Pearl Gold 珍珠金



Gunmetal Gray 枪黑灰



Dream Purple 迷幻紫



02





# CRANK IT UP

## Road & MTB

# GT-12 NEW



### SPECIFICATION

Size: 1/2" x 11/128"

Speed of Sprocket: 12

Color: Ti-N Golden/Ti-N Golden,  
Silver/Silver, Silver/Dark Silver



Strengthened durability, Enhanced PinPower

Superior shifting efficiency

Ave. PinPower: 250KGF

Ave. Tensile Strength: 920KGF

尺寸: 1/2" x 11/128"

速别: 12

颜色: 镀钛金/镀钛金, 镀银/镀银, 镀银/深银

耐磨耗效能强化、优越小轴嵌合力

卓越换档效率

平均嵌合力: 250 公斤力

平均拉力: 920 公斤力







Road  
& MTB

GT-11 **NEW**

11SPEED  
1/2" x 11/128"



#### SPECIFICATION

Size: 1/2" x 11/128"

Speed of Sprocket: 11

Color: Ti-N Golden/Ti-N Golden,  
Silver/Silver, Silver/Dark Silver



Strengthened durability, Enhanced PinPower

Superior shifting efficiency

Ave. PinPower: 250KGF

Ave. Tensile Strength: 920KGF

尺寸: 1/2" x 11/128"

速别: 11

颜色: 镀钛金/镀钛金, 镀银/镀银, 镀银/深银

耐磨耗效能强化、优越小轴嵌合力

卓越换档效率

平均嵌合力: 250 公斤力

平均拉力: 920 公斤力







Road  
& MTB

# GT-10

## 10SPEED

1/2" x 11/128"



### SPECIFICATION

Size: 1/2" x 11/128"

Speed of Sprocket: 10

Color: Silver/Silver, Silver/Dark Silver



Strengthened durability, Enhanced PinPower

Superior shifting efficiency

Ave. PinPower: 200KGF

Ave. Tensile Strength: 920KGF

尺寸: 1/2" x 11/128"

速别: 10

颜色: 镀银/镀银, 镀银/深银

耐磨耗效能强化、优越小轴嵌合力

卓越换档效率

平均嵌合力: 200 公斤力

平均拉力: 920 公斤力





9SPEED  
1/2" x 11/128"

GT-9



#### SPECIFICATION

Size: 1/2" x 11/128"

Speed of Sprocket: 9

Color: Silver/Silver, Dark Silver/Brown



Strengthened durability, Enhanced PinPower

Superior shifting efficiency

Ave. PinPower: 200KGF

Ave. Tensile Strength: 920KGF

尺寸: 1/2" x 11/128"

速别: 9

颜色: 镀银/镀银, 深银/棕

耐磨耗效能强化、优越小轴嵌合力

卓越换档效率

平均嵌合力: 200 公斤力

平均拉力: 920 公斤力



CT-8

NEW



#### SPECIFICATION

Size: 1/2" x 3/32"

Speed of Sprocket: 8

Color: Silver/Bule, Bule/Bule



Superior shifting efficiency

Ave. PinPower: 120KGF

Ave. Tensile Strength: 840KGF

尺寸: 1/2" x 3/32"

速别: 8

颜色: 镀银/深蓝, 深蓝/深蓝

卓越换档效率

平均嵌合力: 120 公斤力

平均拉力: 840 公斤力



CT-7

NEW



#### SPECIFICATION

Size: 1/2" x 3/32"

Speed of Sprocket: 7

Color: Dark Silver/Dark Silver



Superior shifting efficiency

Ave. PinPower: 120KGF

Ave. Tensile Strength: 840KGF

尺寸: 1/2" x 3/32"

速别: 7

颜色: 深银/深银

卓越换档效率

平均嵌合力: 120 公斤力

平均拉力: 840 公斤力



# 5-6SPEED

1/2" x 3/32"

## C30



### SPECIFICATION

Size: 1/2" x 3/32"

Speed of Sprocket: 5-6

Color: Silver/Silver, Silver/Brown, Brown/Brown



Superior shifting efficiency

Ave. PinPower: 110KGF

Ave. Tensile Strength: 840KGF

尺寸: 1/2" x 3/32"

速别: 5-6

颜色: 镀银/镀银, 镀银/棕, 棕/棕

换档效率强化

平均嵌合力: 110 公斤力

平均拉力: 840 公斤力



## C410

# 1SPEED

1/2" x 1/8"



### SPECIFICATION

Size: 1/2" x 1/8"

Speed of Sprocket: 1

Color: Silver/Silver, Dark Silver/Matte Black



Ave. PinPower: 110KGF

Ave. Tensile Strength: 840KGF

尺寸: 1/2" x 1/8"

速别: 1

颜色: 镀银/镀银, 深银/亚黑

平均嵌合力: 110 公斤力

平均拉力: 840 公斤力





# BMX & Fixie



## CT-1HX NEW

Size: 1/2" x 1/8"  
Speed of Sprocket: 1  
Color: Silver/Silver



Heavy Duty Structure, Anti-drop design  
Ave. PinPower: 200KGF  
Ave. Tensile Strength: 1050KGF

尺寸: 1/2" x 1/8"  
速别: 1  
颜色: 镀银/镀银

HX强化结构, 防掉链设计  
平均嵌合力: 200 公斤力  
平均拉力: 1050 公斤力

## CT-1H

NEW

Size: 1/2" x 1/8"  
Speed of Sprocket: 1  
Color: Bule/Bule



Heavy plate, Anti-drop design  
Ave. PinPower: 140KGF  
Ave. Tensile Strength: 950KGF

尺寸: 1/2" x 1/8"  
速别: 1  
颜色: 深蓝/深蓝

强化厚链片, 防掉链设计  
平均嵌合力: 140 公斤力  
平均拉力: 950 公斤力



## CT-1

NEW

Size: 1/2" x 1/8"  
Speed of Sprocket: 1  
Color: Brown/Brown



Anti drop design  
Ave. PinPower: 110KGF  
Ave. Tensile Strength: 840KGF

尺寸: 1/2" x 1/8"  
速别: 1  
颜色: 棕/棕

防掉链设计  
平均嵌合力: 110 公斤力  
平均拉力: 840 公斤力



1SPEED  
1/2" x 1/8"



Fashion  
Color Chain



Colorfull 彩链系列 PT-812C YS-701 YS-728 YS7614 YS719 YS7459-1 YS706 YS7422

Viva  
玩美系列



Silver/Green 銀綠

Starry  
星彩系列



Galaxy Blue 银河蓝



Imperial Green 帝王绿



Sakura Pink 樱花粉

Mirage  
幻魅系列



Pearl Gold 珍珠金



Dream Purple 迷幻紫



Gunmetal Gray 枪黑灰



Samurai Black 黑武士



Sky Blue 晴空蓝



Peacock Blue 孔雀蓝

Option: Unique color customization. 客制: 各式色彩皆可客制于全速别12速-单速规格

GT-9

Size: 1/2" x 11/128"  
Speed of Sprocket: 9  
Color: RB

尺寸: 1/2" x 11/128"  
速别: 9  
颜色: 灰白



GT-8

Size: 1/2" x 3/32"  
Speed of Sprocket: 8  
Color: RB

尺寸: 1/2" x 3/32"  
速别: 8  
颜色: 灰白



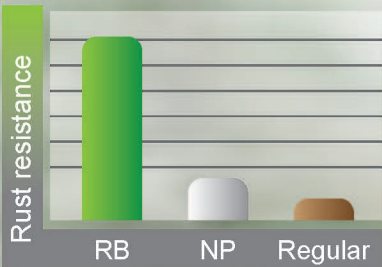
C410

Size: 1/2" x 1/8"  
Speed of Sprocket: 1  
Color: RB

尺寸: 1/2" x 1/8"  
速别: 1  
颜色: 灰白



Option: 9 speed to 1speed can be customized for anti-rust. 客制: 9速-单速规格皆可客制达克锈



RoHS Restriction of Hazardous Substances Directive

RB anti-rust coating  
Surpasses 500 hour salt spray test  
Durable anti-rust coating from a unique surface treatment that surpasses 500 hour Salt Spray Test. Compliant with EU and US RoHS environmental regulations.

独特表面耐用防锈涂层, 耐受超过500小时的盐雾试验。符合欧盟和美国RoHS环境法规







### BIKE CHAIN CLEANER Step 1 深层链条清洗剂

- Size: 740ml
- Easy-to-Use Solvent:
  - Multi-Surface Safe
  - Biodegradable

- 容量: 740ml
- 中性配方PH7
  - 溶剂型使用简单
  - 适用于多种材料表面
  - 易生物降解



### BIKE CHAIN CLEANER Step 2 水基链条清洗剂

- Size: 740ml
- Purified Water Formula
  - Powerful Actives
  - Acid & Alkali-Free

- 容量: 740ml
- 纯水基底混和复合清洁配方
  - 高效能活性成分, 迅速分解油污
  - 无酸碱成分, 符合安全使用



### BIKE FRAME CLEANER WASH & WAX Step 3 二合一洗车液

- Size: 740ml
- Purified Water Formula:
  - Brazilian Carnauba Wax
  - Plant-Based Extracts

- 容量: 740ml
- 纯水基底混和复合清洁配方
  - 巴西棕榈蜡配方
  - 自然植物萃取物



120ml

12ml

### CERAMIC TiO2 ENDURO RACE LUBE 耐力赛链条油

- Size: 120ml, 12ml
- Friction Reducing
  - Anti-Wear
  - Long Lasting

- 容量: 120ml, 12ml
- 2倍黏度, 高黏附力,
  - 适用耐力赛事、潮湿及雨天环境
  - 纳米粒子强化表面薄膜耐久度。



120ml

12ml

### CERAMIC TiO2 All-Time CHAIN LUBE 陶瓷钛链条油

- Size: 120ml, 12ml
- Friction Reducing
  - Anti-Wear
  - Easy-To-Clean

- 容量: 120ml, 12ml
- 纳米粒子强化表面薄膜耐久度。
  - 动态润滑, 离心动力均匀扩散厚度。
  - 灰尘不易附着, 保养简单容易。



120ml

12ml

### WAX ADMIXTURE LUBE 复方链条蜡

- Size: 120ml, 12ml
- Reduce Friction
  - Low Wear
  - Quick Dry
  - Easy-To-Clean

- 容量: 120ml, 12ml
- 高渗透蜡膜科技全面包覆。
  - 抗磨润滑膜, 耐高负荷低磨损性能。
  - 干式中性配方, 灰尘不易附着。

# MixBar

## Lube & Cleaner





**TAICANG TEC  
INTERNATIONAL TRADING CO., LTD.**

---

NO 381 XINGYE NORTH ROAD,  
TAICANG CITY,JIANGSU, CHINA.  
Email: [tecweb@tecchain.com](mailto:tecweb@tecchain.com)

powered by  Group